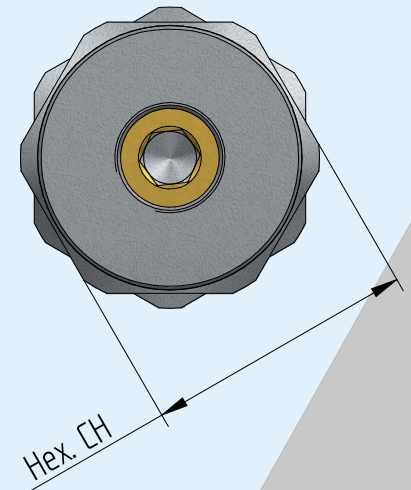
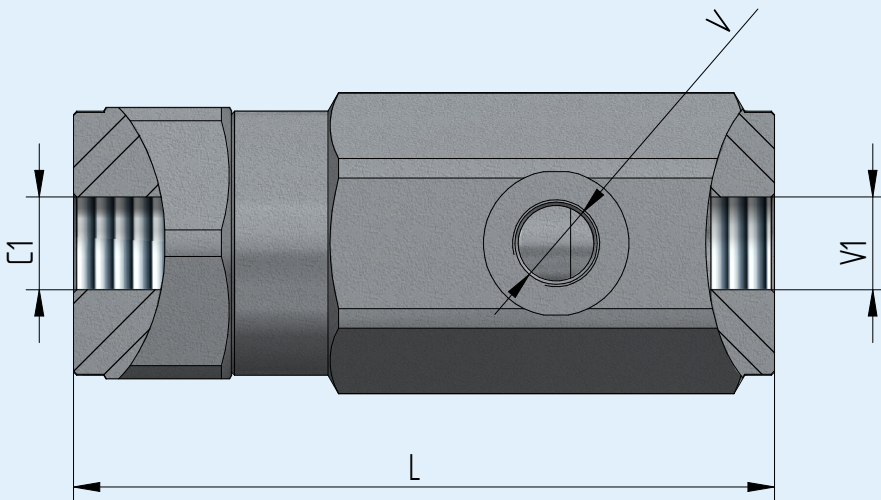
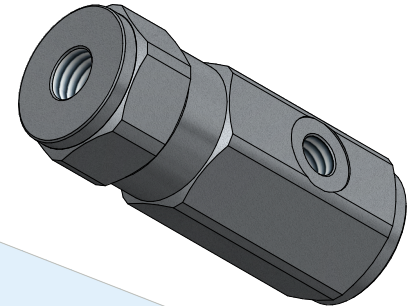
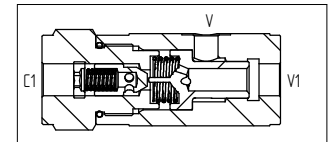
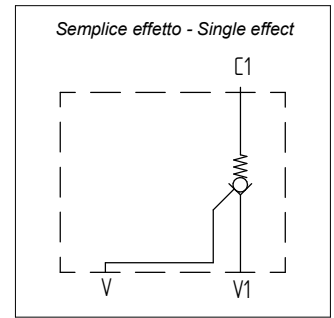


Descrizione Description	VBPSE -G1/4	VBPSE -G3/8	VBPSE -G1/2	VBPSE -G3/4	VBPSE -G1"
Pressione massima - Max pressure Bar	350	300	300	250	250
Portata - Flow Lt/min	25	40	60	90	100
Peso - Weight Kg	0,75	1	1,1	2	3,6
V1 - C1	1/4 GAS	3/8 GAS	1/2 GAS	3/4 GAS	1" GAS
V (Max 12 mm)	1/4 GAS	1/4 GAS	1/4 GAS	1/4 GAS	1/4 GAS
L	103	109	122	131	155
Hex. CH	36	40	42	55	55
Pressione apertura Opening pressure Bar	1	1	1	1	1
Rapporto pilotaggio - Pilot ratio	1:8,5	1:6	1:4,5	1:4,5	1:4
Materiale corpo - Body material	Acciaio galvanizzato - Galvanized steel				



### Codice di ordinazione Ordering code

VBP	Option 1	SE	-	Option 2
				G1/4
				G3/8
				G1/2
				G3/4
				G1

Option 1	
SE	Valvola di blocco a singolo effetto Check valve single acting

Option 2	
Thread V1 - C1	
G1/4	Filetto 1/4 Gas Thread 1/4 Gas
G3/8	Filetto 3/8 Gas Thread 3/8 Gas
G1/2	Filetto 1/2 Gas Thread 1/2 Gas
G3/4	Filetto 3/4 Gas Thread 3/4 Gas
G1	Filetto 1" Gas Thread 1" Gas

