

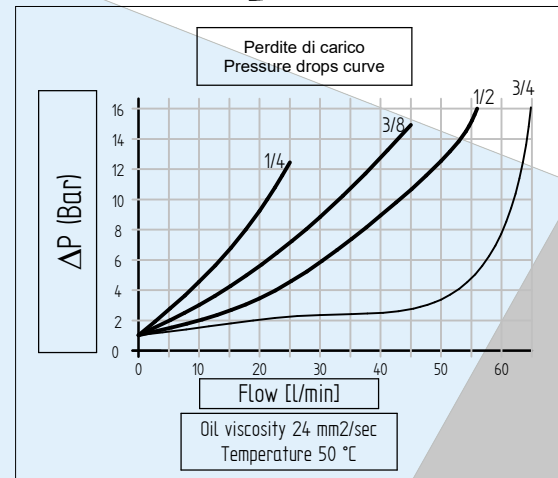
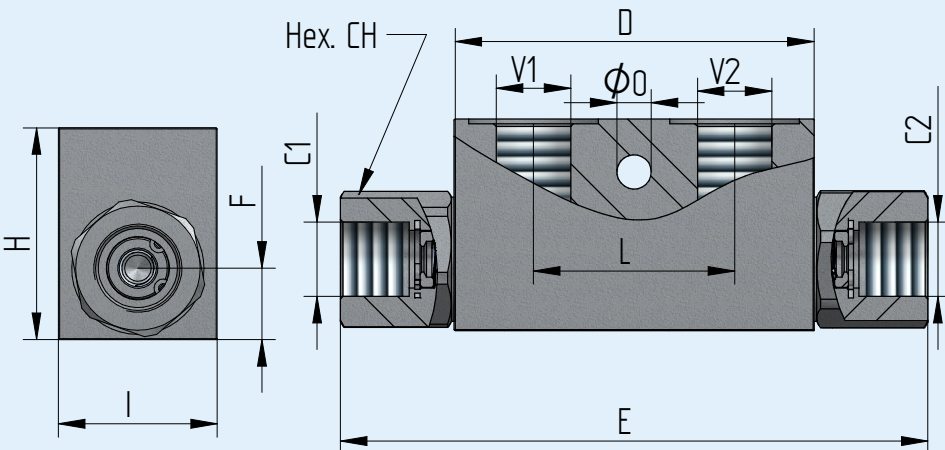
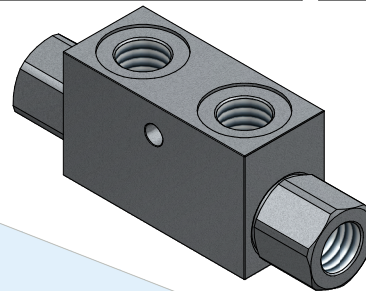
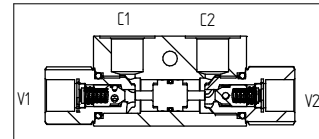
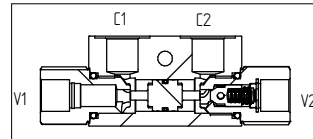
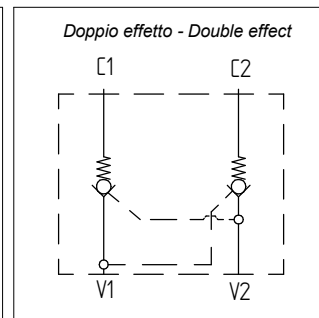
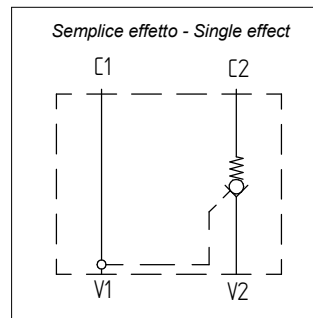
VBSE~VBDE Valvola di blocco pilotata

Pilot operated check valve

Steel body



Descrizione Description	VB -G1/4	VB -G3/8	VB -G1/2	VB -G3/4
Pressione massima - Max pressure Bar	350	350	300	210
Portata - Flow Lt/min	30	30	50	70
Peso - Weight Kg	0,65	0,65	1,06	1,9
V1 - V2	1/4 GAS	3/8 GAS	1/2 GAS	3/4 GAS
C1 - C2	1/4 GAS	3/8 GAS	1/2 GAS	3/4 GAS
D	64	64	80	100
E	107	107	158	192
F	13,5	13,5	18	21
H	40	40	50	60
I	30	30	30	40
L	36	36	40	50
Hex. CH	24	24	30	36
O	∅ 5,5	∅ 7	∅ 6,5	∅ 8,5
Rapporto pilotaggio - Pilot ratio	1:4	1:4	1:3	1:3,5
Materiale corpo - Body material	Acciaio galvanizzato - Galvanized steel			



Codice di ordinazione Ordering code

VB	Option 1	-	Option 2	Option 3	Option 4	- S Solamente per G1/4 e G3/8. Only for G1/4 and G3/8.	
	SE		G1/4				M
	DE		G3/8				N
			G1/2				X
	G3/4						

Nel caso non si indicasse l'Opzione3 e/o l'Opzione4, sarà fornita in configurazione standard.

If Option3 and/or Option4 are not indicated, standard configuration will be considered.

Option 1	
SE	Valvola di blocco a singolo effetto Check valve single acting
DE	Valvola di blocco a doppio effetto Check valve double acting

Option 2	
Thread V1 - V2	
G1/4	Filetto 1/4 Gas Thread 1/4 Gas
G3/8	Filetto 3/8 Gas Thread 3/8 Gas
G1/2	Filetto 1/2 Gas Thread 1/2 Gas
G3/4	Filetto 3/4 Gas Thread 3/4 Gas

Option 3		*= standard	
M (*)	O-Ring su pistone pilota With seal on pilot piston		
N	Senza O-Ring su pistone pilota Without seal on pilot piston		

Option 4	*= standard
X (*)	Pressione di apertura Cracking pressure 3 Bar

G.L. HYDRAULIC S.R.L.

Via Statale, 249 - 44047 Terre del Reno (FE) - Italy

Phone: +39(0)516828230 - E-mail: staff@glhydraulic.it - www.glhydraulic.it

C.F. - P.I. : IT01808760357

Dati tecnici indicativi e non impegnativi.
L'azienda si riserva di apportare modifiche in qualsiasi momento e senza preavviso.
Technical data not binding. Modifications reserved without prior notice.