

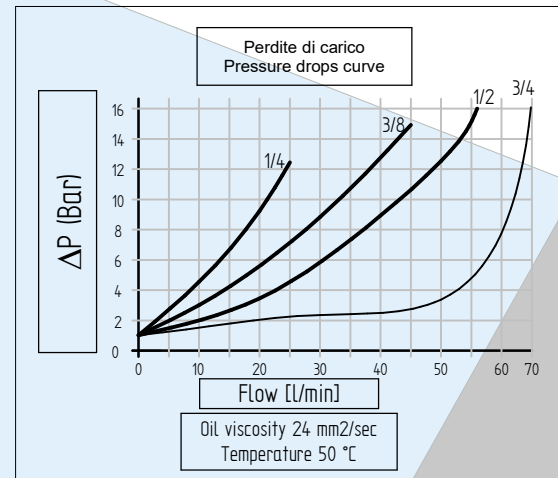
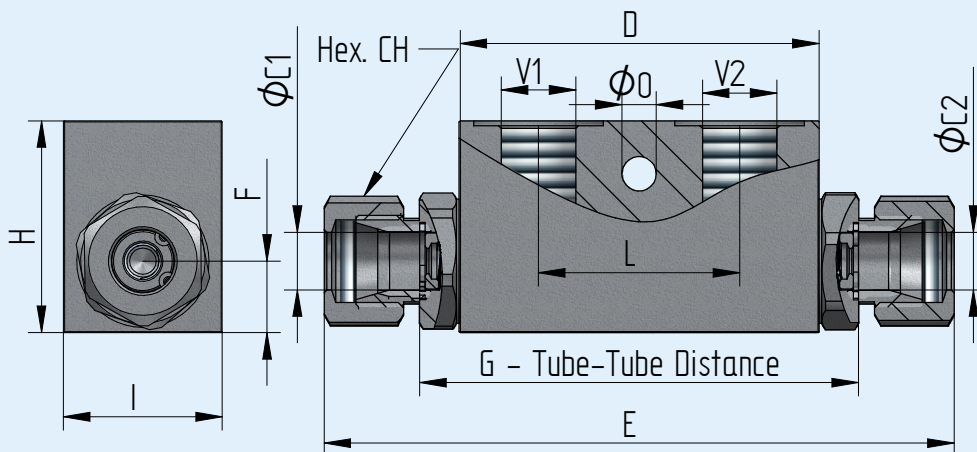
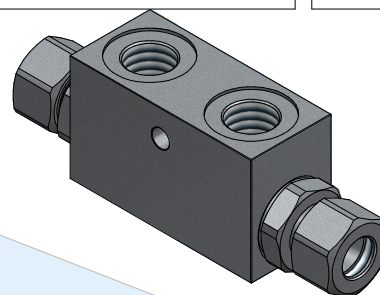
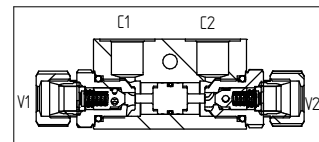
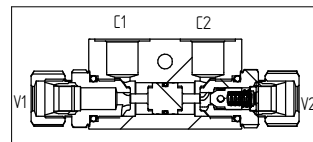
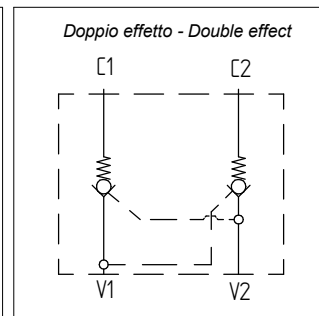
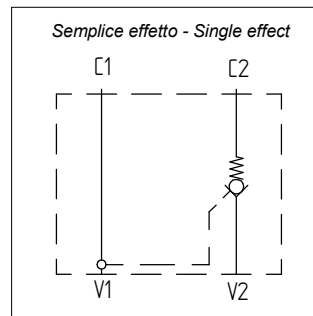
VBSD~VBDD Valvola di blocco pilotata

Pilot operated check valve

Steel body



Descrizione Description	VB -G1/4	VB -G3/8	VB -G1/2	VB -G3/4
Pressione massima - Max pressure Bar	350	350	300	210
Portata - Flow Lt/min	30	30	50	70
Peso - Weight Kg	0,65	0,65	1,06	1,99
V1 - V2	1/4 GAS	3/8 GAS	1/2 GAS	3/4 GAS
C1 - C2	Ø 12	Ø 12	Ø 15	Ø 25
D	65	65	80	100
E	129	129	162,5	205
F	13,5	13,5	18	21
G	84	84	111	163
H	40	40	50	60
I	30	30	30	40
L	36	36	40	50
Hex. CH	22	22	27	46
O	Ø 5,5	Ø 7	Ø 6,5	Ø 8,5
Rapporto pilotaggio - Pilot ratio	1:4,6	1:4,6	1:3	1:3,5
Materiale corpo - Body material	Acciaio galvanizzato - Galvanized steel			



Codice di ordinazione Ordering code

VB	Option 1	SD	Option 2	G1/4	Option 3	M	Option 4	X	- S Solamente per G1/4 e G3/8. Only for G1/4 and G3/8.
		DD		G3/8		N			
				G1/2					
				G3/4					

Nel caso non si indicasse l'Opzione3 e/o l'Opzione4, sarà fornita in configurazione standard.

If Option3 and/or Option4 are not indicated, standard configuration will be considered.

Option 1	
SD	Valvola di blocco a singolo effetto Check valve single acting
DD	Valvola di blocco a doppio effetto Check valve double acting

Option 2	
Thread V1 - V2	
G1/4	Filetto 1/4 Gas Thread 1/4 Gas
G3/8	Filetto 3/8 Gas Thread 3/8 Gas
G1/2	Filetto 1/2 Gas Thread 1/2 Gas
G3/4	Filetto 3/4 Gas Thread 3/4 Gas

Option 3		*= standard	
M (*)	O-Ring su pistone pilota With seal on pilot piston		
N	Senza O-Ring su pistone pilota Without seal on pilot piston		

Option 4	*= standard
X (*)	Pressione di apertura Cracking pressure 1 Bar

G.L. HYDRAULIC S.R.L.

Via Statale, 249 - 44047 Terre del Reno (FE) - Italy

Phone: +39(0)516828230 - E-mail: staff@glhydraulic.it - www.glhydraulic.it

C.F. - P.I. : IT01808760357

Dati tecnici indicativi e non impegnativi.
L'azienda si riserva di apportare modifiche in qualsiasi momento e senza preavviso.
Technical data not binding. Modifications reserved without prior notice.