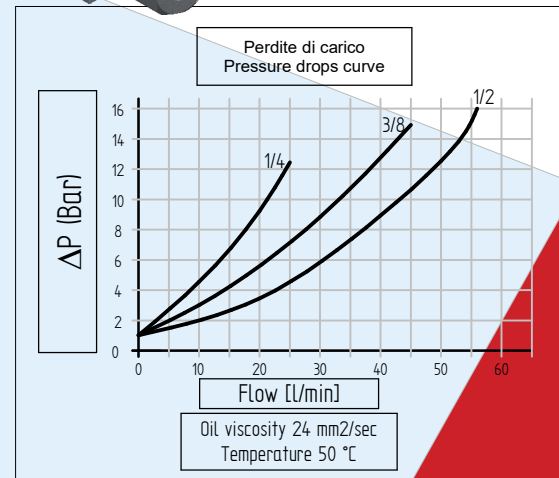
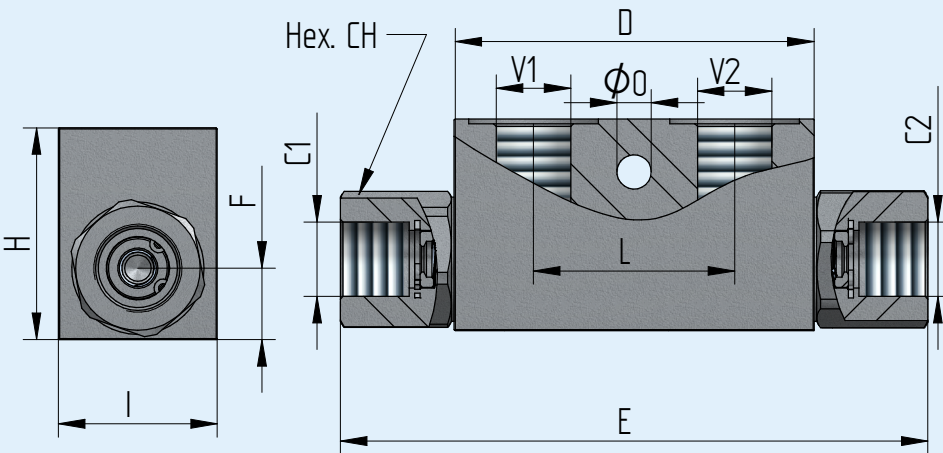
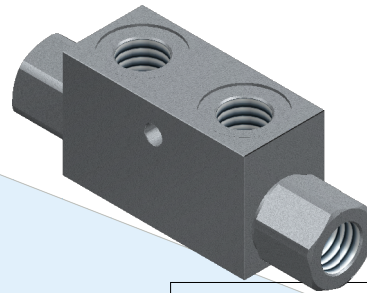
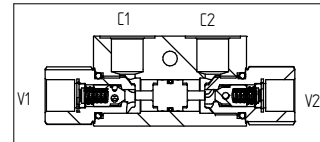
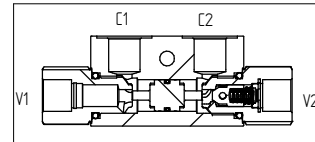
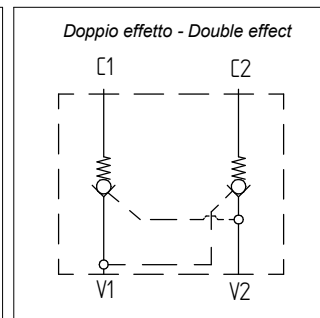
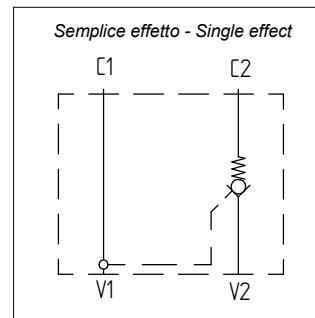


Descrizione Description	AI316VB -G1/4	AI316 VB -G3/8	AI316 VB -G1/2
Pressione massima - Max pressure Bar	350	350	300
Portata - Flow Lt/min	30	30	50
Peso - Weight Kg	0,65	0,65	1,06
V1 - V2	1/4 GAS	3/8 GAS	1/2 GAS
C1 - C2	1/4 GAS	3/8 GAS	1/2 GAS
D	64	64	80
E	107	107	158
F	13,5	13,5	18
H	40	40	50
I	30	30	30
L	36	36	40
Hex. CH	24	24	30
O	5,5	7	6,5
Rapporto pilotaggio - Pilot ratio	1:4	1:4	1:3
Materiale corpo - Body material	STAINLESS STEEL AISI316		



Codice di ordinazione Ordering code

AI316VB	Option 1	-	Option 2	Option 3	Option 4
	SE		G1/4	M	X
	DE		G3/8	N	
	G1/2				

Nel caso non si indicasse l'Opzione3 e/o l'Opzione4, sarà fornita in configurazione standard.

If Option3 and/or Option4 are not indicated, standard configuration will be considered.

Option 1	
SE	Valvola di blocco a singolo effetto Check valve single acting
DE	Valvola di blocco a doppio effetto Check valve double acting

Option 2	
Thread V1 - V2	
G1/4	Filetto 1/4 Gas Thread 1/4 Gas
G3/8	Filetto 3/8 Gas Thread 3/8 Gas
G1/2	Filetto 1/2 Gas Thread 1/2 Gas

Option 3	*= standard
M (*)	O-Ring su pistone pilota With seal on pilot piston
N	Senza O-Ring su pistone pilota Without seal on pilot piston

Option 4	*= standard
X (*)	Pressione di apertura Cracking pressure 3 Bar