

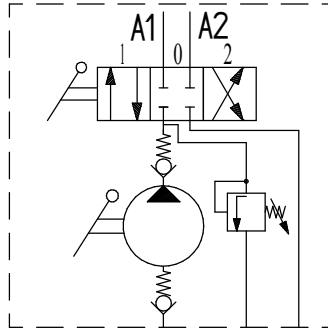
ALHPTD

Aluminium body
Stainless steel rod piston

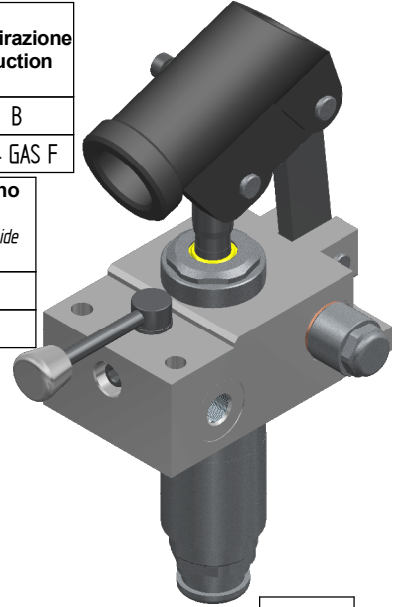
Funzionamento a doppio effetto per cilindro a doppio effetto
Double-stroke for a double acting cylinder



Code	Cilindrata Flow (cc)	Pressione massima Max pressure (bar)	Peso Weight (Kg)
ALHPTD06DCCVOUT	6	220	2,9
ALHPTD12DCCVOUT	12,5	220	2,9
ALHPTD25DCCVOUT	19,4	220	2,9
ALHPTD45DCCVOUT	28	220	2,9



Mandata Pressure porte	Aspirazione Suction
A1 - A2	B
1/4 GAS F	1/4 GAS F
Diametro interno porta leva Lever connection inside diameter	
C	
27 mm	



Taratura valvola di massima pressione - Comunque non oltre la pressione massima della pompa.
Relief valve setting - However not over the pump's max pressure
min - max (bar) 30 - 220

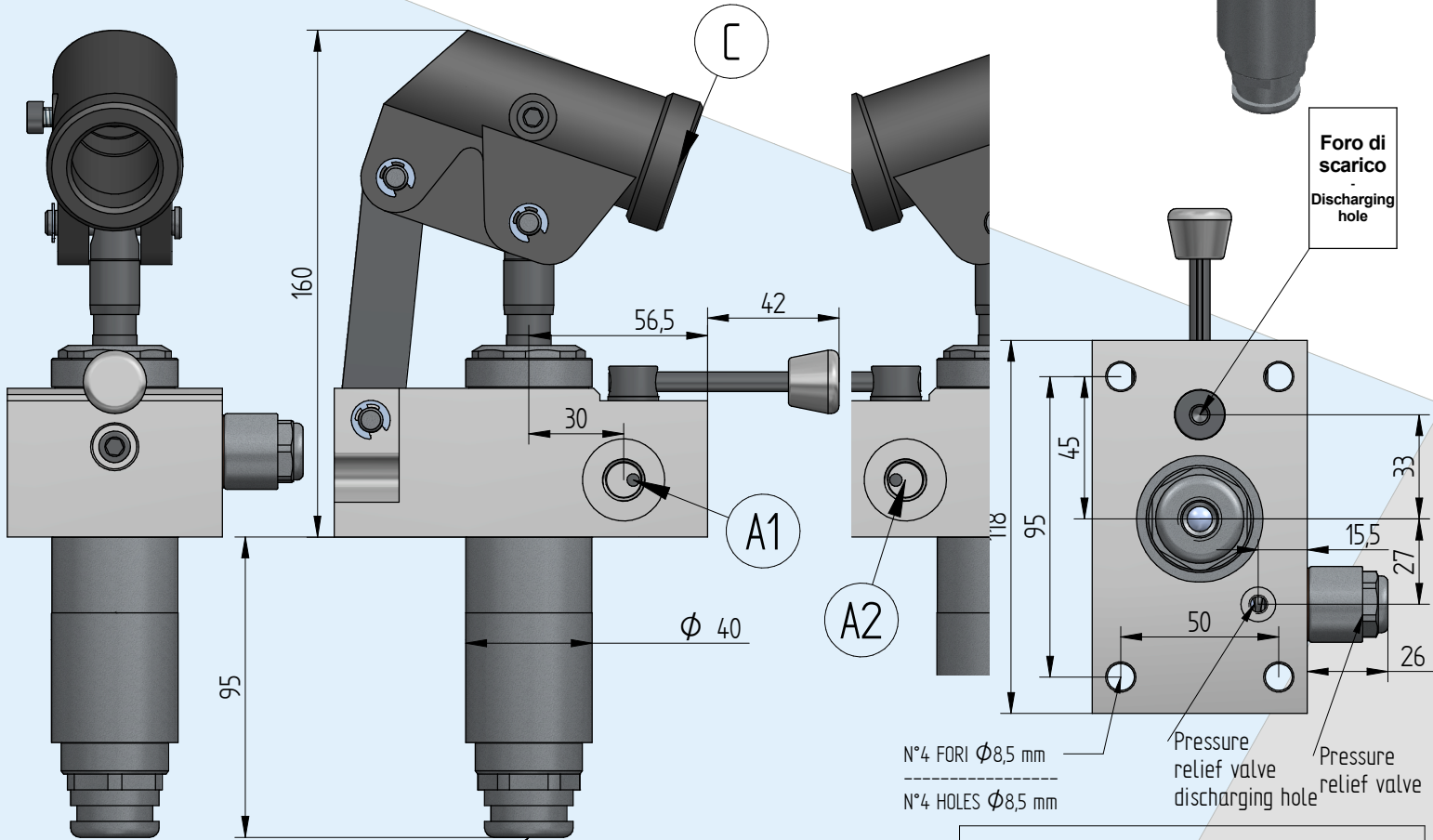
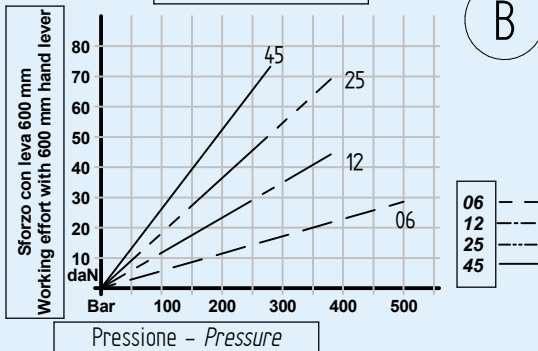
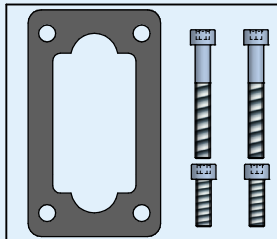


Diagramma prove di carico
Load curve



Montaggio: Qualsiasi posizione
Mounting: Any position

Kit di montaggio al serbatoio
Mounting kit to oil tank



KFIL - KFILL - KFILS

Filtro per aspirazione ordinabile separatamente
Suction filter can be ordered separately

