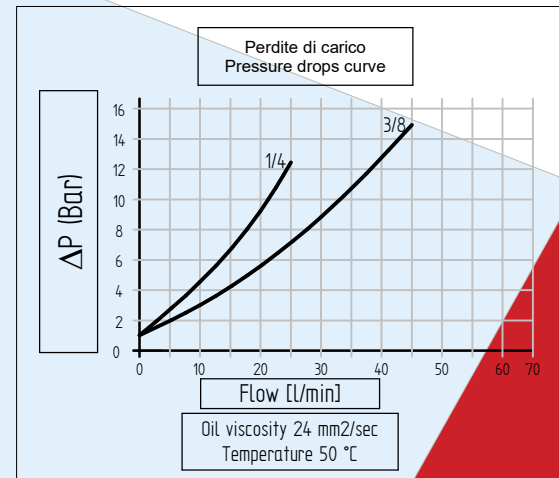
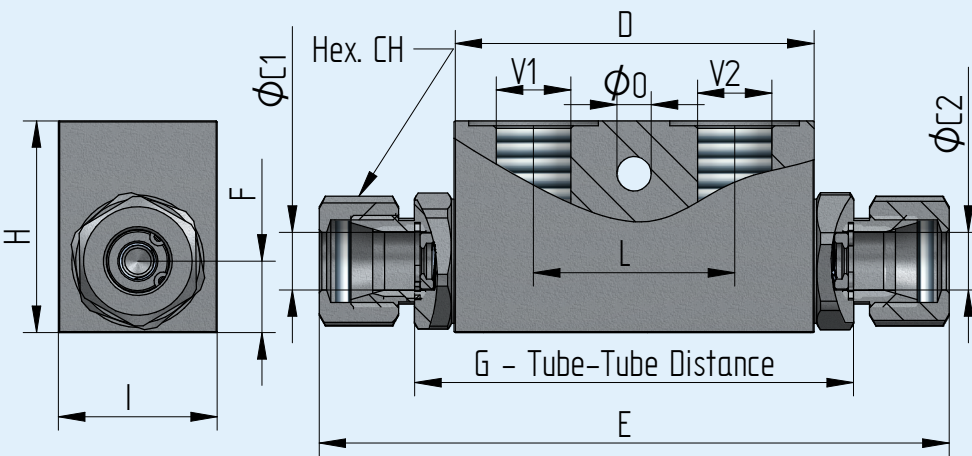
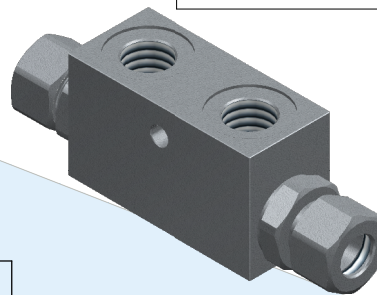
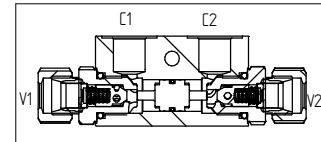
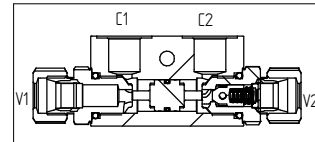
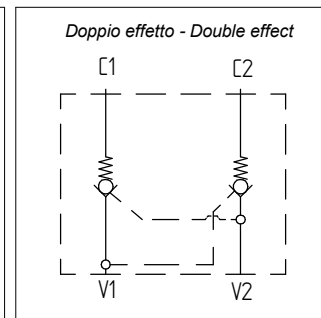
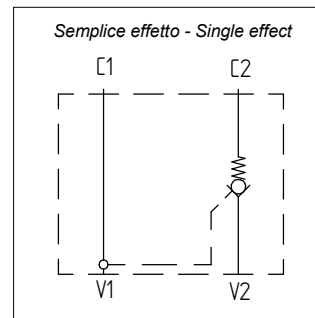


Descrizione Description	AI316 VB -G1/4	AI316 VB -G3/8	
Pressione massima - Max pressure	Bar	350	350
Portata - Flow	Lt/min	30	30
Peso - Weight	Kg	0,65	0,65
V1 - V2	1/4 GAS	3/8 GAS	
C1 - C2	∅ 12	∅ 12	
D	65	65	
E	129	129	
F	13,5	13,5	
G	84	84	
H	40	40	
I	30	30	
L	36	36	
Hex. CH	22	22	
O	5,5	7	
Rapporto pilotaggio - Pilot ratio	1:4,6	1:4,6	
Materiale corpo - Body material	STAINLESS STEEL AISI316		



Codice di ordinazione Ordering code

AI316VB	Option 1	SD	-	Option 2	G1/4	Option 3	M	Option 4	X
		DD			G3/8				N

Nel caso non si indicasse l'Opzione3 e/o l'Opzione4, sarà fornita in configurazione standard.

If Option3 and/or Option4 are not indicated, standard configuration will be considered.

Option 1	
SD	Valvola di blocco a singolo effetto Check valve single acting
DD	Valvola di blocco a doppio effetto Check valve double acting

Option 2	
Thread V1 - V2	
G1/4	Filetto 1/4 Gas Thread 1/4 Gas
G3/8	Filetto 3/8 Gas Thread 3/8 Gas

Option 3	
*= standard	
M (*)	O-Ring su pistone pilota With seal on pilot piston
N	Senza O-Ring su pistone pilota Without seal on pilot piston

Option 4	*= standard
X (*)	Pressione di apertura Cracking pressure 1 Bar