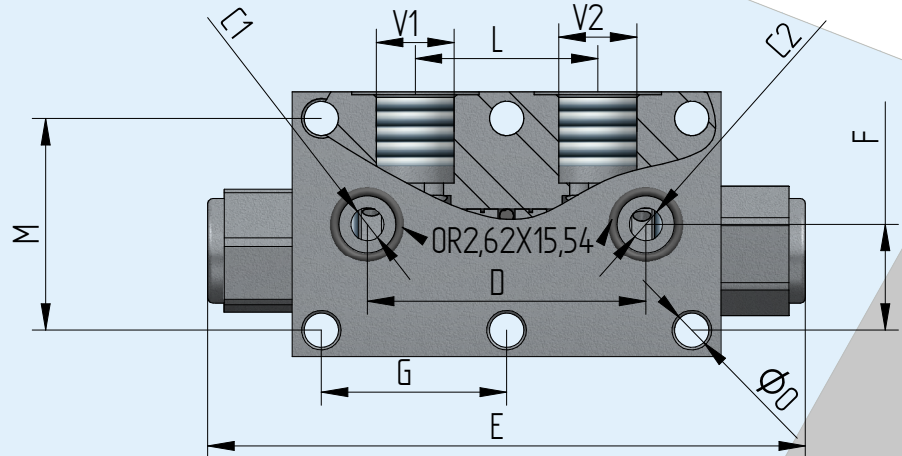
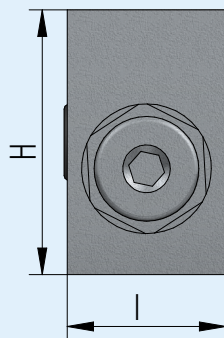
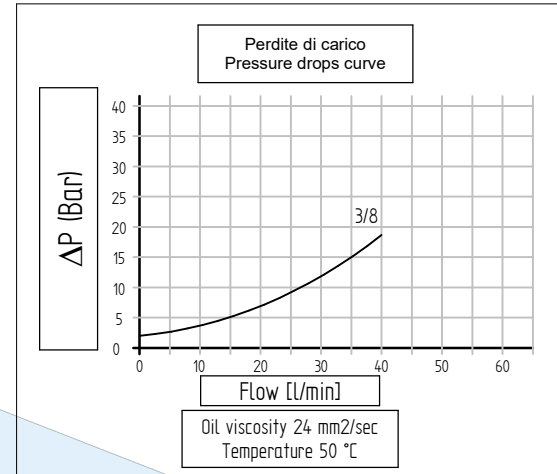
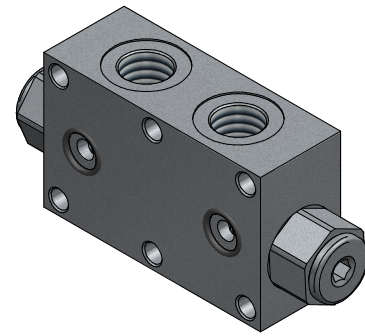
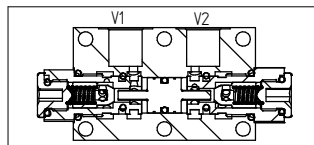
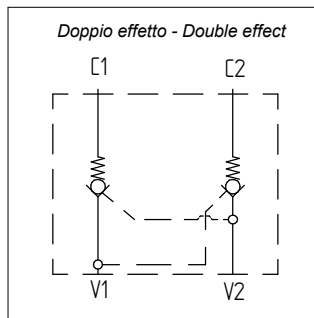


<b>Descrizione Description</b>	<b>VB -G3/8</b>
<b>Pressione massima - Max pressure</b>	<b>Bar 350</b>
<b>Portata - Flow</b>	<b>Lt/min 40</b>
<b>Peso - Weight</b>	<b>Kg 1,8</b>
<b>V1 - V2</b>	<b>3/8 GAS</b>
<b>C1 - C2</b>	<b>∅ 9</b>
<b>D</b>	<b>65</b>
<b>E</b>	<b>138</b>
<b>F</b>	<b>20</b>
<b>G</b>	<b>40</b>
<b>H</b>	<b>70</b>
<b>I</b>	<b>34</b>
<b>L</b>	<b>34</b>
<b>M</b>	<b>40</b>
<b>O</b>	<b>∅ 8,5</b>
<b>Rapporto pilotaggio - Pilot ratio</b>	<b>1:4</b>
<b>Materiale corpo - Body material</b>	<b>Acciaio galvanizzato - Galvanized steel</b>



### Codice di ordinazione Ordering code

VBDEFL -	Option 1	G3/8	Option 2	M	Option 3	X
			N			

<b>Option 1</b>
<b>Thread V1 - V2</b>
G3/8 Filetto 3/8 Gas Thread 3/8 Gas

<b>Option 2</b>	*= standard
M (*)	O-Ring su pistone pilota With seal on pilot piston
N	Senza O-Ring su pistone pilota Without seal on pilot piston

Nel caso non si indicasse l'Opzione2 e/o l'Opzione3, sarà fornita in configurazione standard.

If Option2 and/or Option3 are not indicated, standard configuration will be considered.

<b>Option 3</b>	*= standard
X (*)	Pressione di apertura Cracking pressure 3 Bar