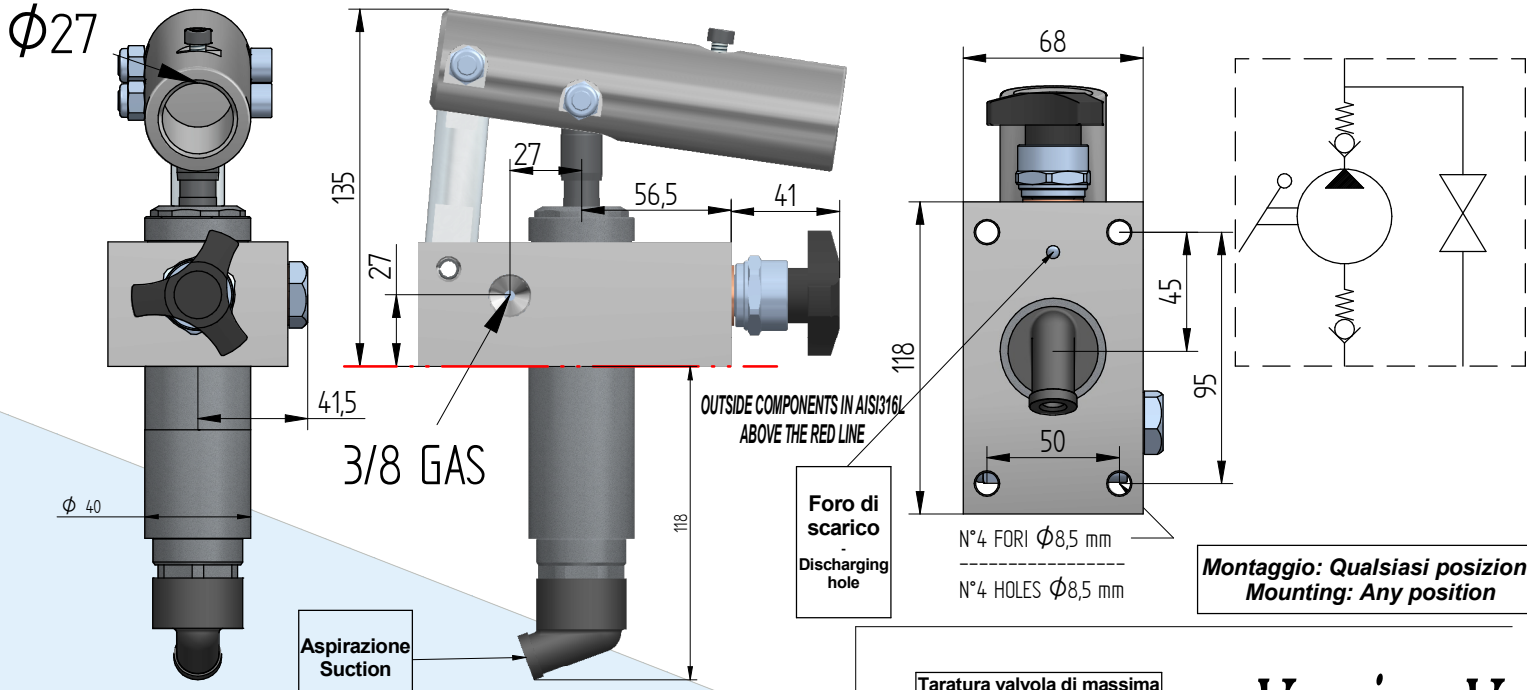


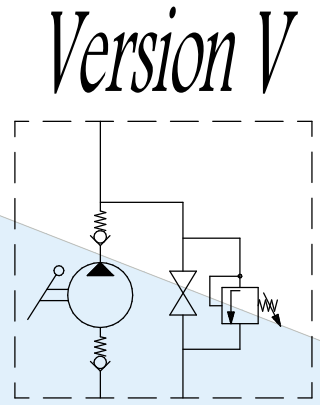
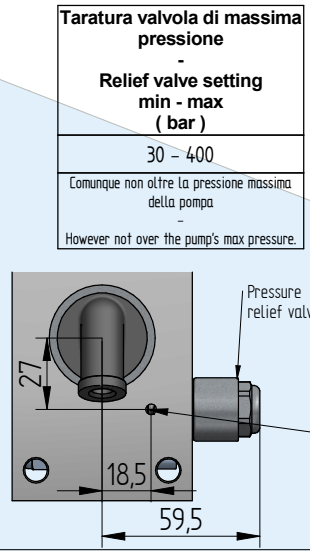
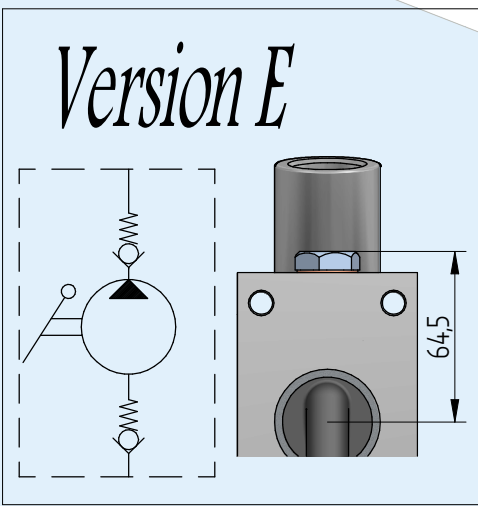
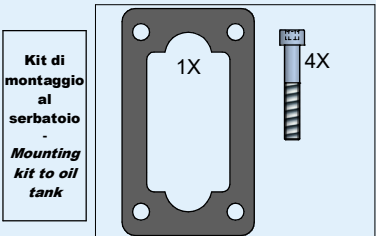
AI316HPT

Stainless steel 316

Funzionamento a doppio effetto per cilindro a semplice effetto
Double-stroke for a single acting cylinder



Montaggio: Qualsiasi posizione
Mounting: Any position



Taratura valvola di massima pressione
- Relief valve setting min - max (bar)
30 - 400
Comunque non oltre la pressione massima della pompa
- However not over the pump's max pressure.

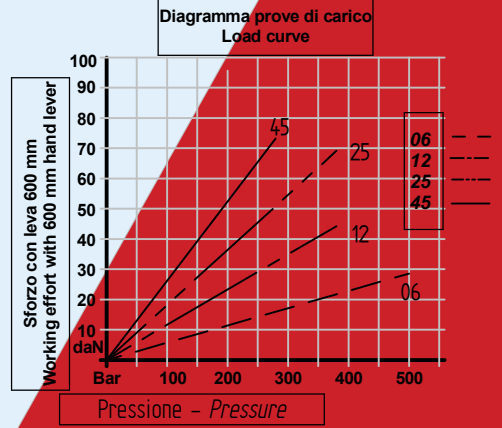
Codice di ordinazione / Ordering code

AI316HPT

Option 1	12	Option 2		Option 3		Option 4	
	12	E		V		S	
	25						
	45						

Option 1		Option 2	
6	6,0 CC Hand pump		With release handknob
12	12,5 CC Hand pump		Without release handknob
25	19,4 CC Hand pump	E	
45	28,0 CC Hand pump		
Option 3		Option 4	
	Without pressure relief valve		Without bellows
V	With pressure relief valve	S	With bellows

Line	Cilindrata Flow (cc)	Pressione massima Max pressure (bar)	Peso Weight (Kg)
6	6	400	4,3
12	12,5	320	4,3
25	19,4	300	4,3
45	28	250	4,3



Dati tecnici indicativi e non impegnativi.
L'azienda si riserva di apportare modifiche in qualsiasi momento e senza preavviso.
Technical data not binding. Modifications reserved without prior notice.