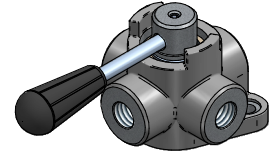
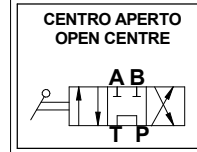
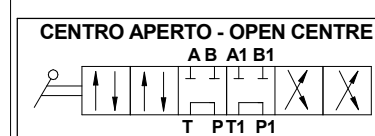
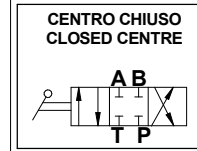


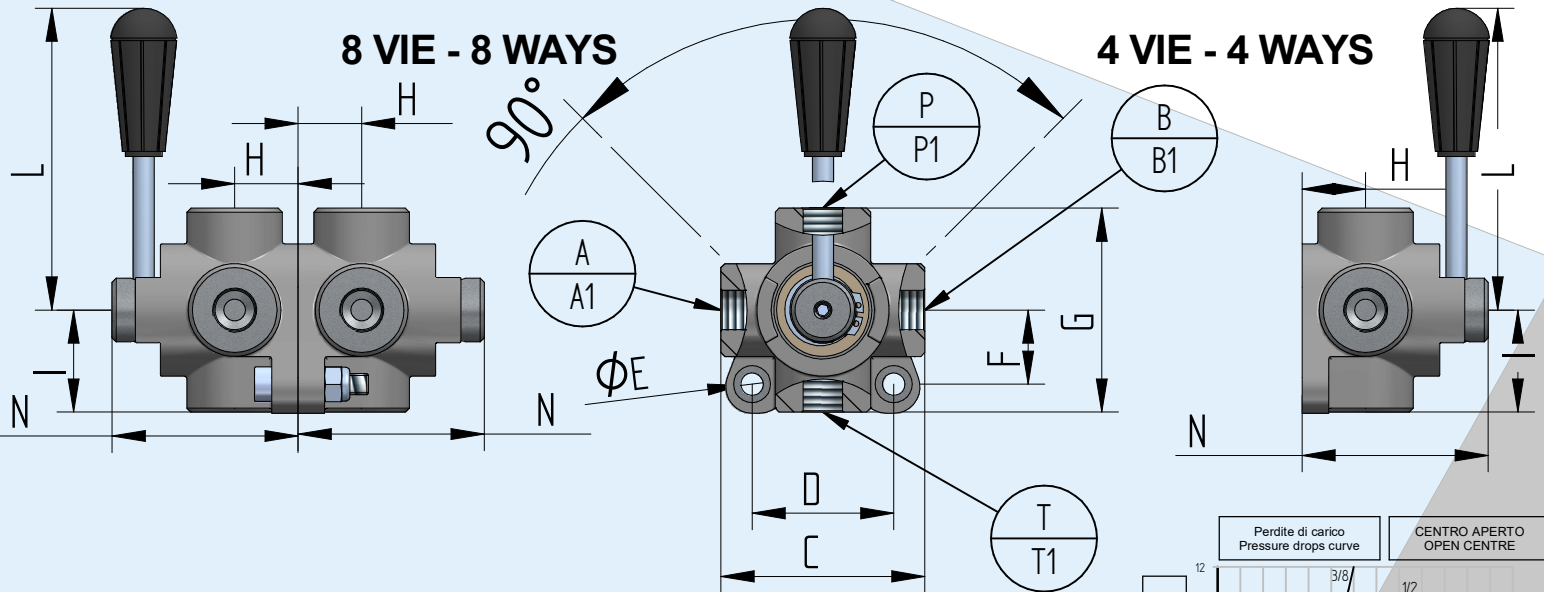
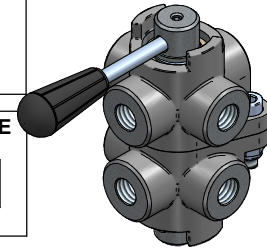
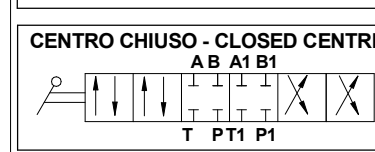
Descrizione / Codice Description / Code	INV 3/8		INV 1/2		INV 3/4	
	4V	8V	4V	8V	4V	8V
Pressione massima - Max pressure Bar	300		250		250	
Portata - Flow Lt/min	60	60+60	90	90+90	120	120+120
Peso - Weight Kg	1,27	2,54	1,87	3,76	2,50	5,00
A - B - T - P -- A1 - B1 - T1 - P1	3/8 GAS		1/2 GAS		3/4 GAS	
C	77		90		95	
D	53.5		68		74	
E	8,5		8,5		8,5	
F	28		35		38	
G	77		90		95	
H	24		28		32	
I	39		45		50	
L	126		123		145	
N	70		80		90	



4 VIE - 4 WAYS



8 VIE - 8 WAYS



Codice di ordinazione - Ordering code

INV	Option 1	4 V	Option 2	3/8	Option 3	CA
		8 V				1/2
				3/4		

Option 1	
4V	N. 4 vie di connessione N. 4 ways connection
8V	N. 8 vie di connessione N. 8 ways connection

Option 2	
Thread A-B-T-P-A1-B1-T1-P1	
G3/8	Filetto 3/8 Gas - Thread 3/8 Gas
G1/2	Filetto 1/2 Gas - Thread 1/2 Gas
G3/4	Filetto 3/4 Gas - Thread 3/4 Gas

Option 3	
CA	Cursore centro aperto Open centre cursor
CC	Cursore centro chiuso Closed centre cursor

