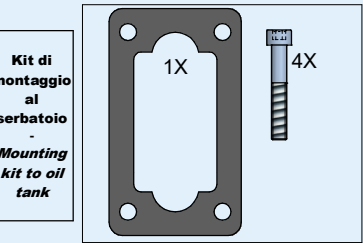
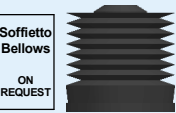
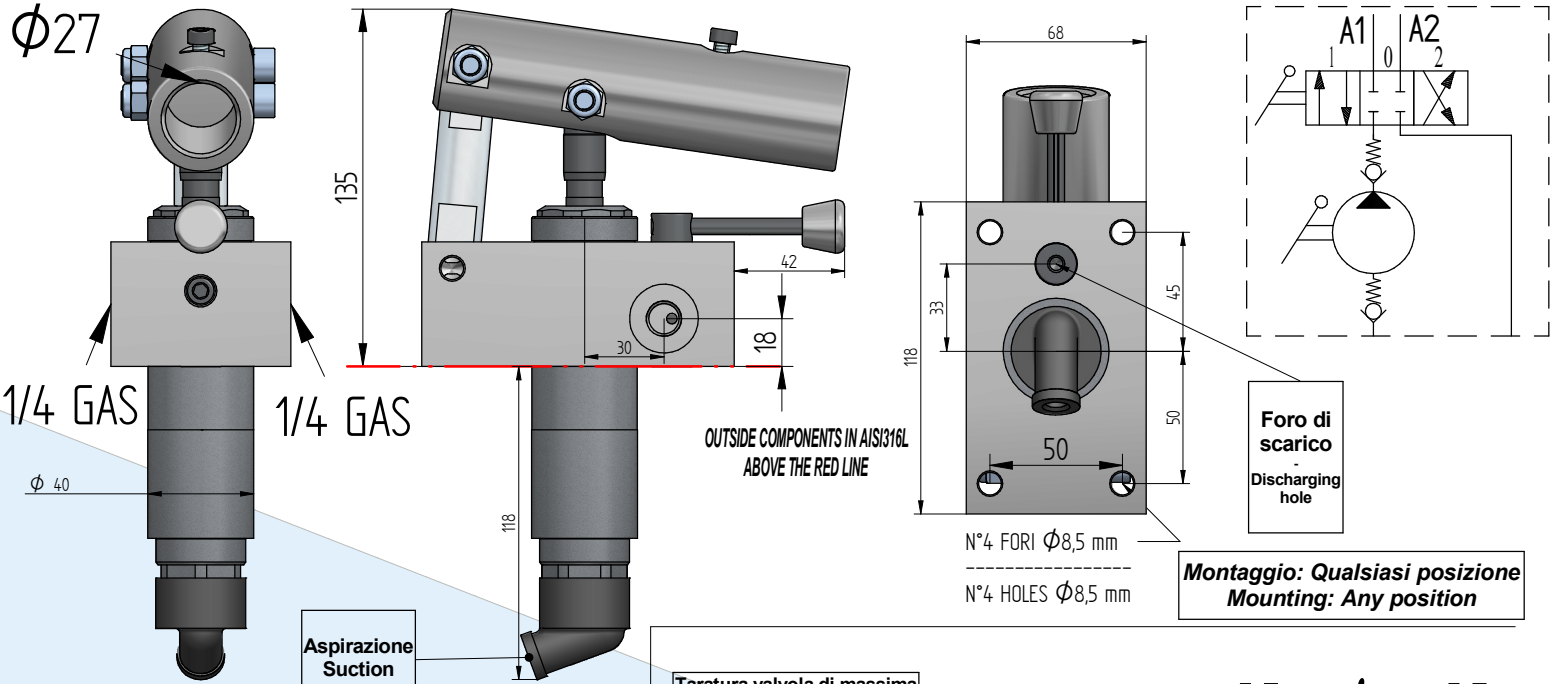


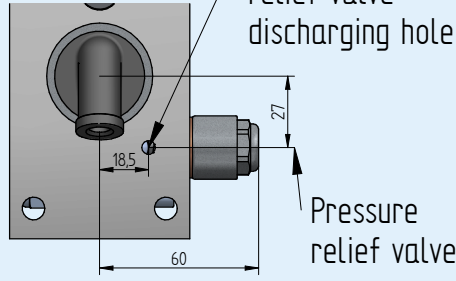
# AI316HPTD

Stainless steel 316

Funzionamento a doppio effetto per cilindro a doppio effetto  
Double-stroke for a double acting cylinder

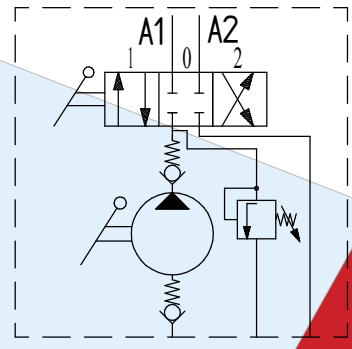


Taratura valvola di massima pressione  
-  
Relief valve setting  
min - max  
( bar )  
30 - 320  
Comunque non oltre la pressione massima della pompa  
-  
However not over the pump's max pressure.



Montaggio: Qualsiasi posizione  
Mounting: Any position

## Version V



Codice di ordinazione / Ordering code

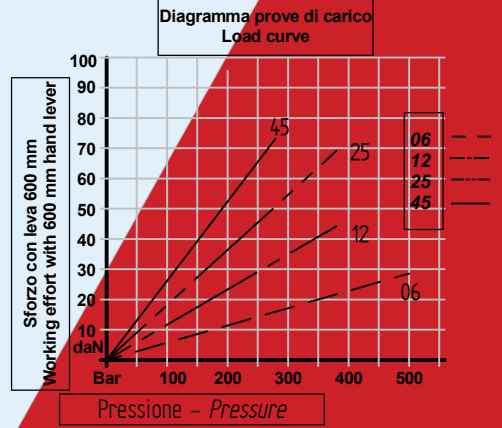
**AI316HPTD**    Option 1: **12**, **12**, **25**, **45**    **DCC**    Option 2: **VOUT**    Option 3: **S**

Option 1	
6	6,0 CC Hand pump
12	12,5 CC Hand pump
25	19,4 CC Hand pump
45	28,0 CC Hand pump

Option 2	
	Without pressure relief valve
VOUT	With pressure relief valve

Option 3	
	Without bellows
S	With bellows

Line	Cilindrata Flow (cc)	Pressione massima Max pressure (bar)	Peso Weight (Kg)
6	6	200	4,3
12	12,5	200	4,3
25	19,4	200	4,3
45	28	200	4,3



Dati tecnici indicativi e non impegnativi.  
L'azienda si riserva di apportare modifiche in qualsiasi momento e senza preavviso.  
Technical data not binding. Modifications reserved without prior notice.