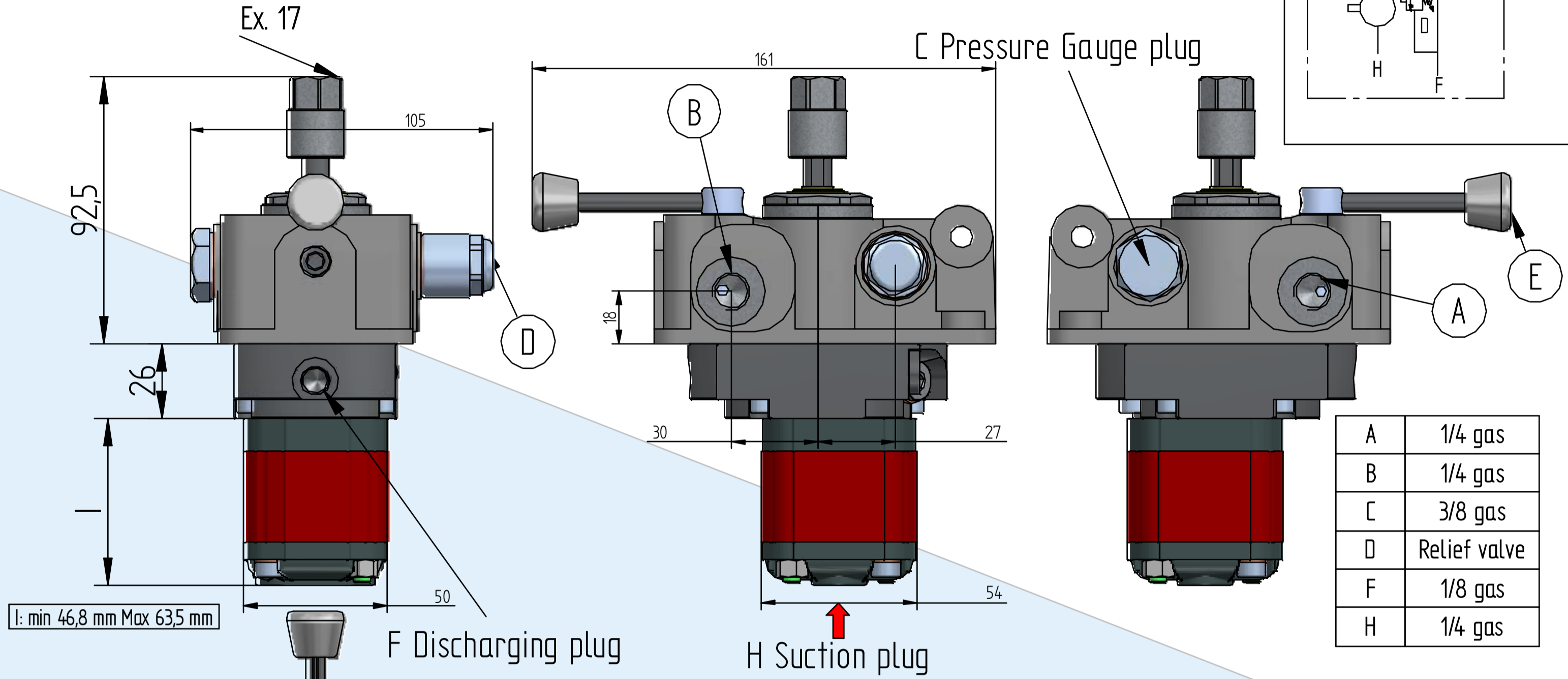
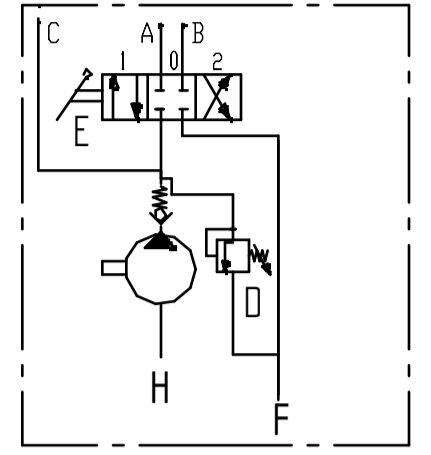


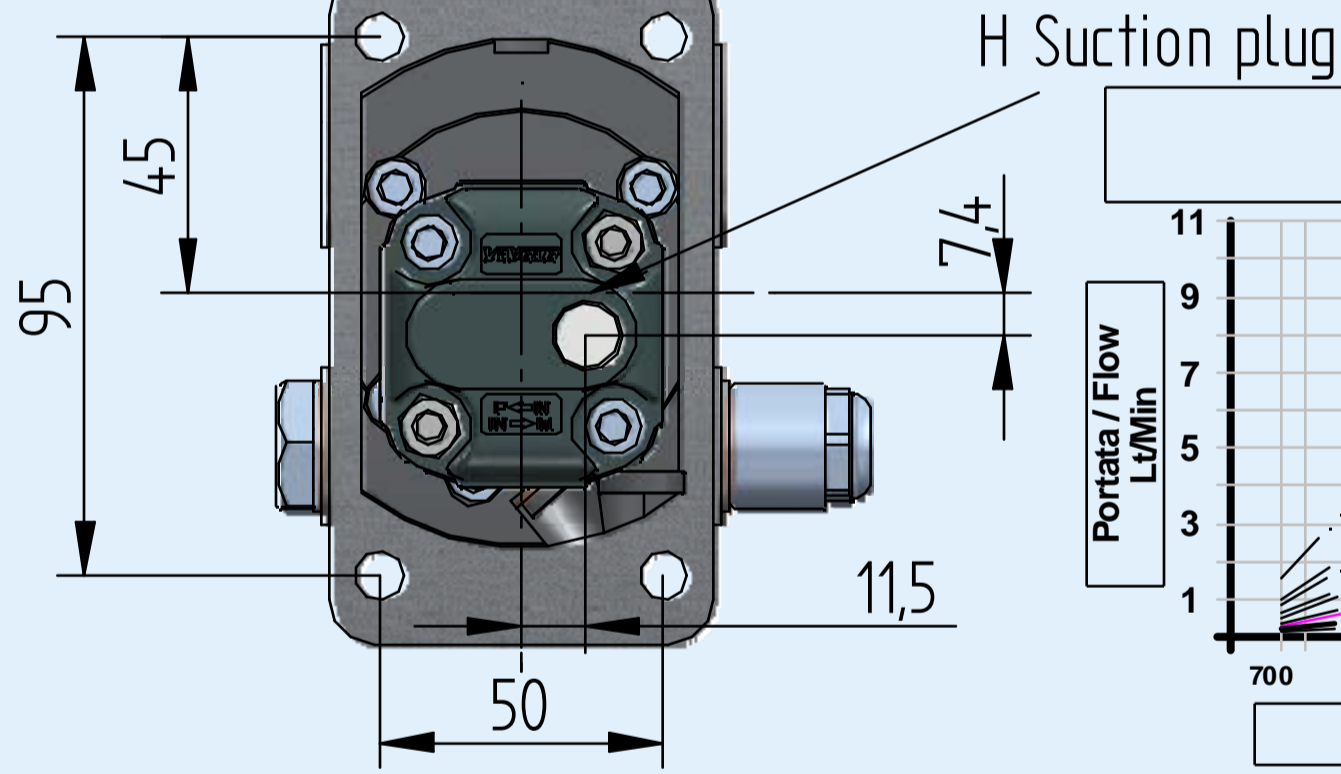
*For double acting cylinder  
stand alone*

Clockwise rotation  
Rotazione oraria

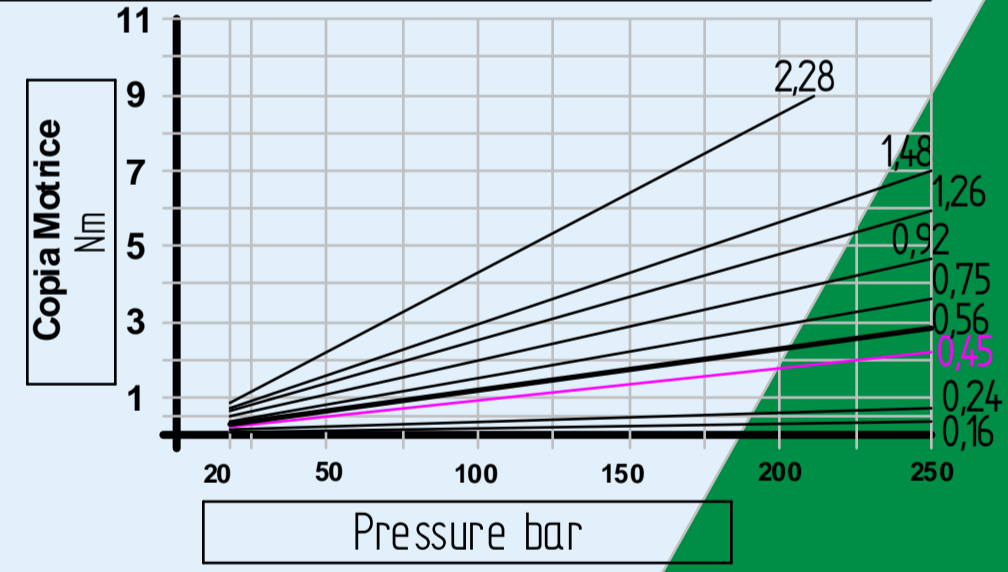
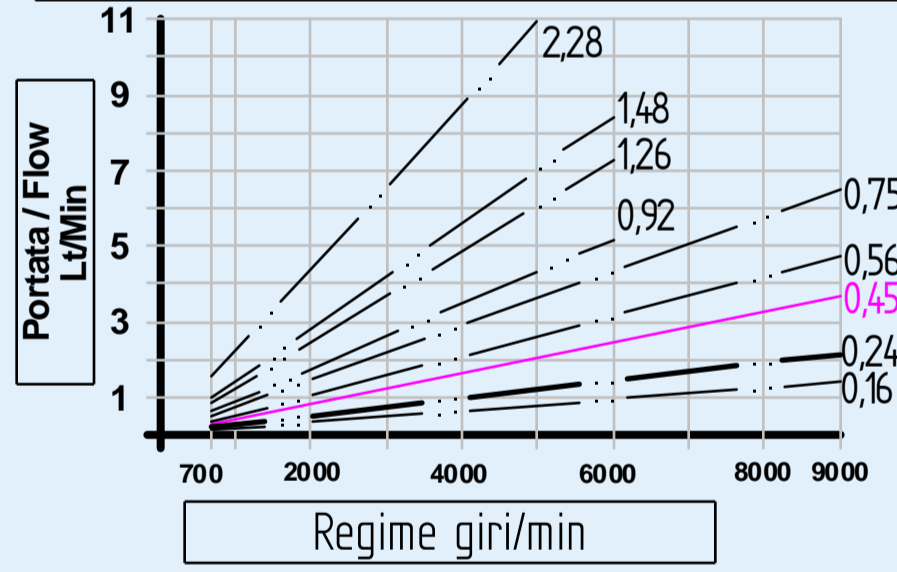
For double acting cylinder  
Per cilindro a doppio effetto



**Taratura valvola di massima pressione - Comunque non oltre la pressione massima della pompa.**  
**Relief valve setting - However not over the pump's max pressure**  
min - max (bar) 30 - (...)



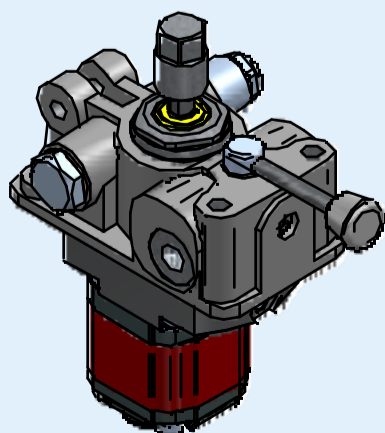
### Pompa ad ingranaggi - Gear pump



### Codice di ordinazione - Ordering code

ZES	Option 1	017	DEBP
		025	
		045	
		057	
		076	
		098	
		127	
		152	
		230	

Option 1 cc Gear pump	
017	0,16 cc
025	0,24 cc
045	0,45 cc - Standard Version
057	0,56 cc
076	0,75 cc
098	0,92 cc
127	1,26 cc
152	1,48 cc
230	2,28 cc



Type	Cilindrata Flow (cc)	Pressione massima Max pressure (bar)	rpm min.	rpm max.
017	0,16	260	700	9.000
025	0,24	260	700	9.000
045	0,45	280	700	9.000
057	0,56	280	700	9.000
076	0,75	280	700	9.000
098	0,92	280	700	6.000
127	1,26	280	700	6.000
152	1,48	280	700	6.000
230	2,28	210	700	5.000
Peso/Weight		3,3 kg		