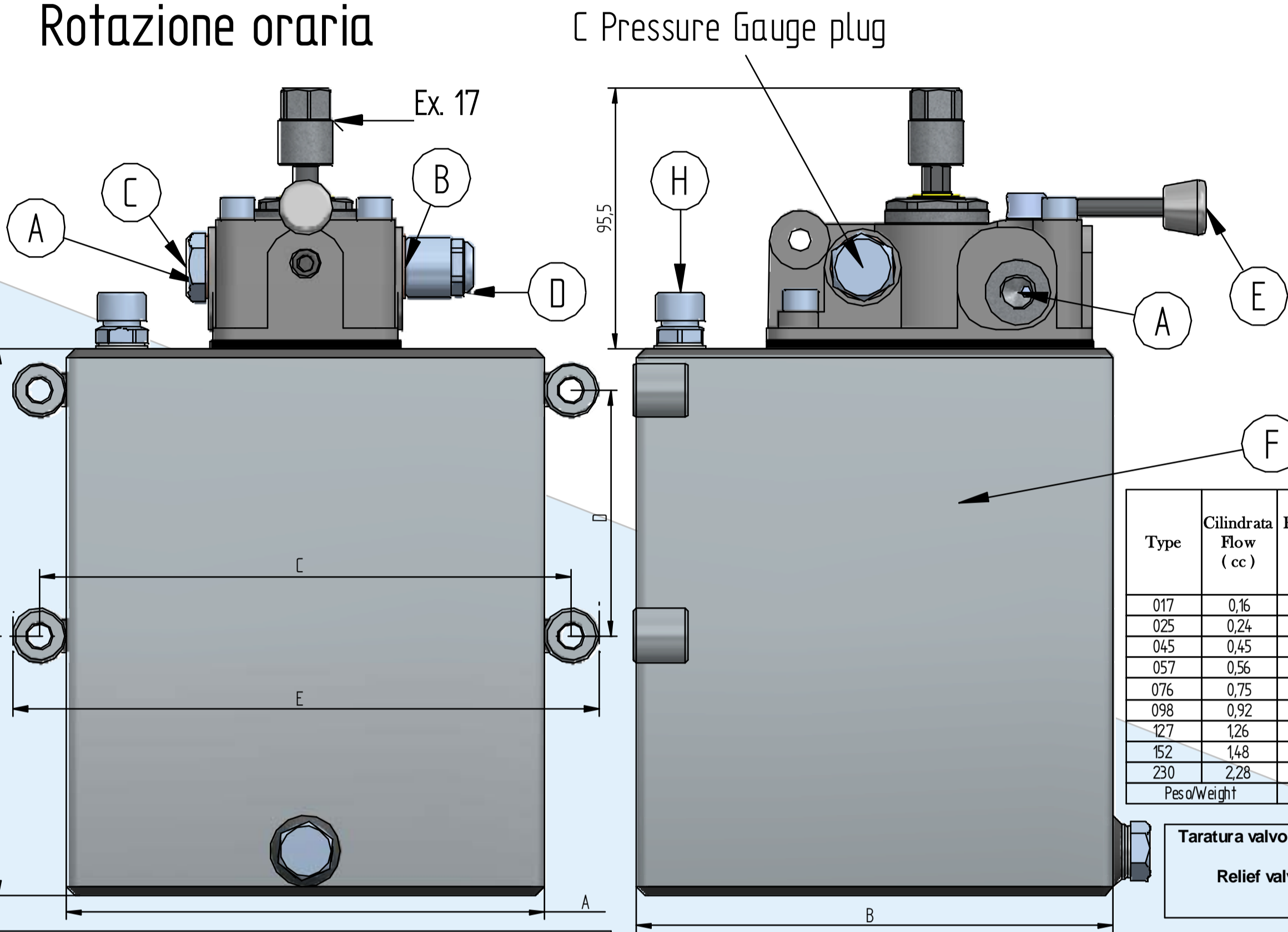
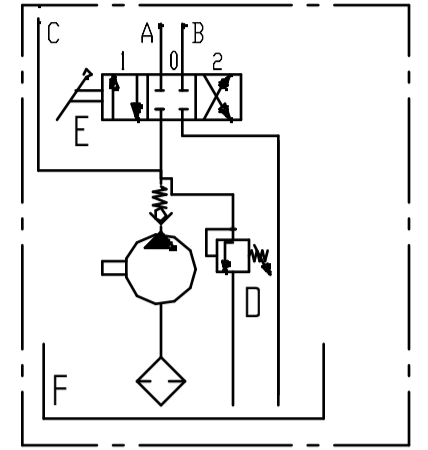


For double acting cylinder  
with oil tank

Clockwise rotation  
Rotazione oraria

For double acting cylinder  
Per cilindro a doppio effetto



A	1/4 gas
B	1/4 gas
C	3/8 gas
D	Relief valve
F	Oil Tank
H	Breather cap

Type	Cilindrata Flow (cc)	Pressione massima Max pressure (bar)	rpm min.	rpm max.
017	0,16	260	700	9,000
025	0,24	260	700	9,000
045	0,45	280	700	9,000
057	0,56	280	700	9,000
076	0,75	280	700	9,000
098	0,92	280	700	6,000
127	1,26	280	700	6,000
152	1,48	280	700	6,000
230	2,28	210	700	5,000
Peso/Weight		3,3 Kg		

Taratura valvola di massima pressione - Comunque non oltre la pressione massima della pompa.  
Relief valve setting - However not over the pump's max pressure  
min - max (bar) 30 - (...)

### Codice di ordinazione Ordering code

ZES **Option 1** DE **Option 2**

#### Option 1

cc Gear pump

#### Option 2

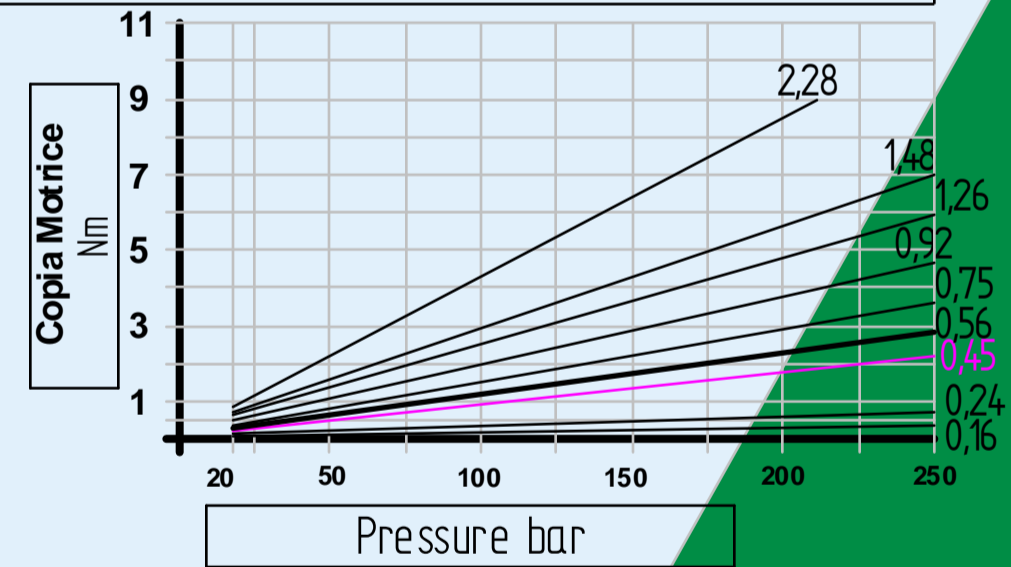
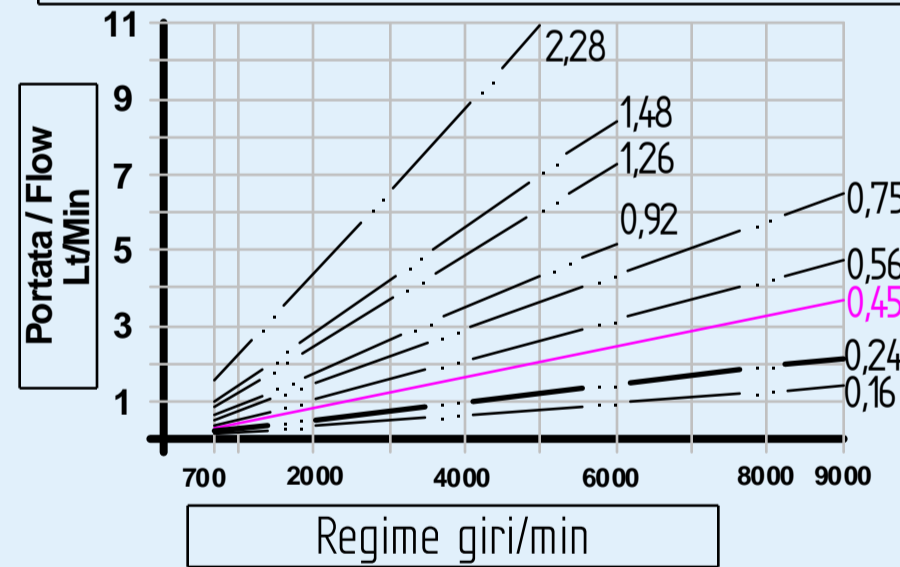
Oil Tank

017	0,16 cc
025	0,24 cc
045	0,45 cc - Standard Version
057	0,56 cc
076	0,75 cc
098	0,92 cc
127	1,26 cc
152	1,48 cc
230	2,28 cc

Total Weight Kg  
3,3 + Weight of oil tank

Coppia di serraggio vite con rivetto: 8/10 Nm  
Torque of fastened screw: 8/10 Nm

### Pompa ad ingranaggi - Gear pump



## Option 2

	SR 01	SR 02	SR 03	SR 05	SR 07	SR 10	SR 02,5 -160	SR 04 -160	SR 06 -160	SR 08 -160	SR 02 -150	SR 03 -150	SR 05 -150	SR 07 -150	SR 10 -150	SR 01 ALO	SR 02 ALO	SR 03 ALO	SR 05 ALO
Capacità - Tank capacity (litres)	1	2	3	5	7	10	2,5	4	6	8	2	3	5	7	10	1	2	3	5
Spie livello olio - Oil level																x	x	x	x
Tappo sfiato - Breather cap	x	x	x	x	x	x	x	x	x	x	x	x	x	x	x	x	x	x	x
Alluminio - Aluminium																x	x	x	x
Ferro verniciato - Painted iron	x	x	x	x	x	x	x	x	x	x	x	x	x	x	x				
A (mm)	100	100	100	175	175	175	160	160	160	160	150	150	150	150	150	132	174	174	174
B (mm)	150	150	150	175	175	175	160	160	160	160	150	150	150	150	150	157	181	181	181
C (mm)	120	120	120	195	195	195	180	180	180	180	170	170	170	170	170	96	180	180	180
D (mm)	90	90	90	90	90	90	90	90	90	90	80	80	80	80	80	110	90	90	90
E (mm)	140	140	140	215	215	215	200	200	200	200	190	190	190	190	190	132	202	202	202
H (mm)	120	180	245	200	269	376	120	180	265	350	120	156	245	340	485	145	142	223	303
Peso - Weight (Kg)	2	2,2	2,5	4,5	5,4	6,8	2,9	3,9	5,0	6,2	2,6	3,1	4,3	5,6	7,6	1,3	1,7	1,9	2,4