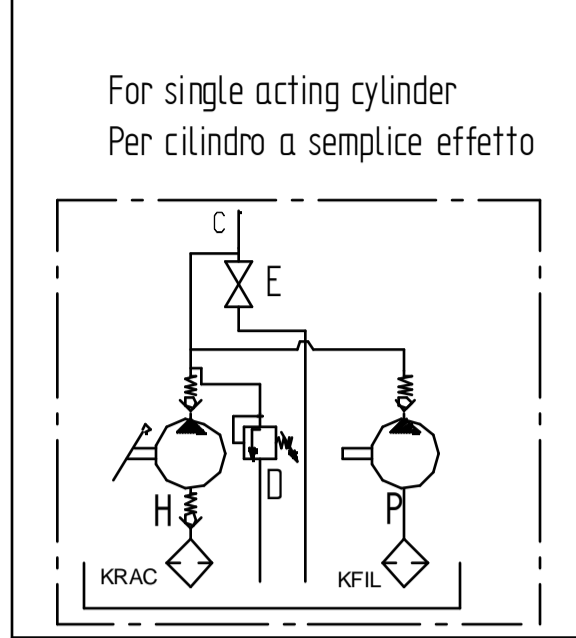


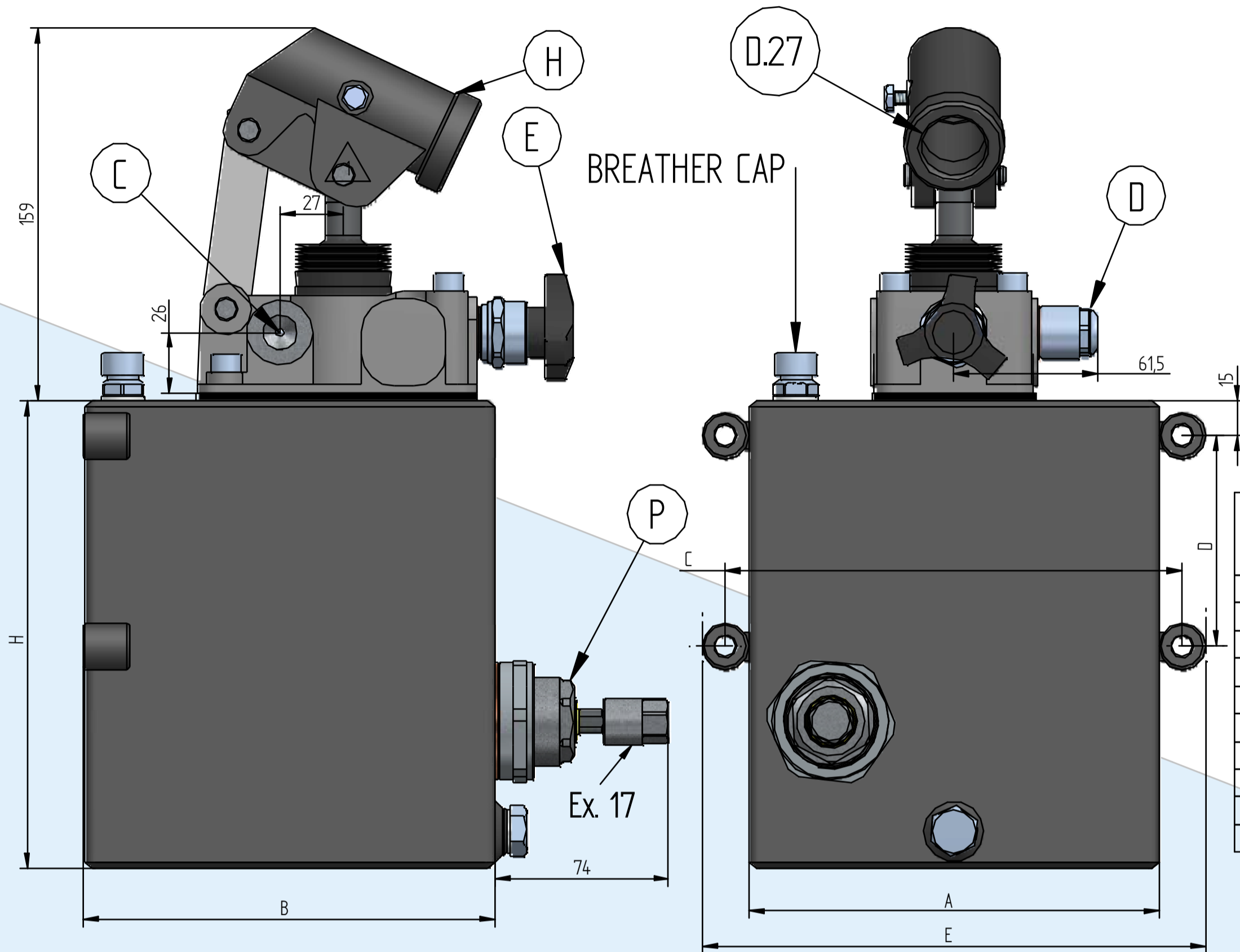
SE_SR

Clockwise rotation
Rotazione oraria

For single acting cylinder
with oil tank



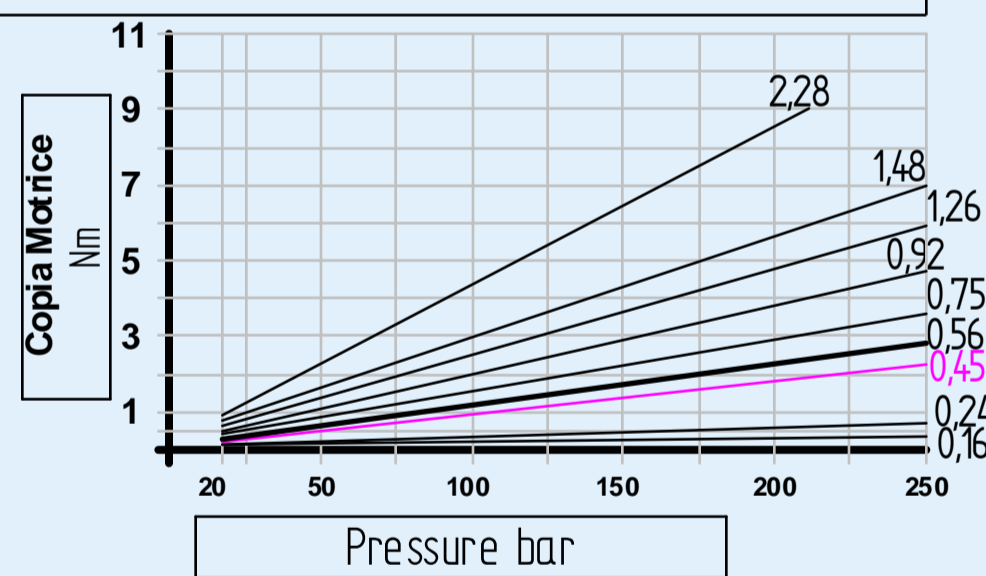
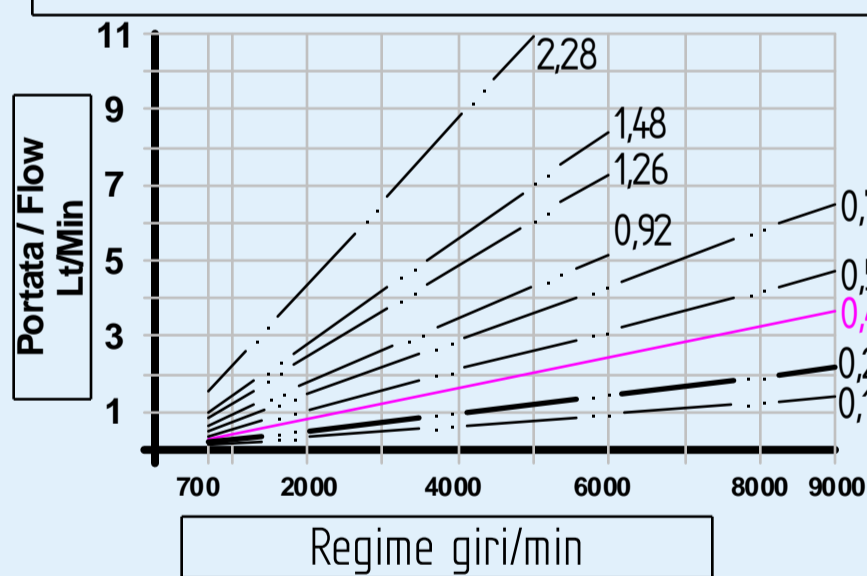
C	3/8 gas
D	Relief valve



Oil Tank	SR 03 FE	SR 05 FE	SR 07 FE	SR 10 FE
Capacità - Tank capacity (litres)	3	5	7	10
Tappo sfiato - Breather cap	X	X	X	X
Ferro verniciato - Painted iron	X	X	X	X
A (mm)	100	175	175	175
B (mm)	150	175	175	175
C (mm)	120	195	195	195
D (mm)	90	90	90	90
E (mm)	140	215	215	215
H (mm)	245	200	269	376
Peso - Weight (Kg)	2,5	4,5	5,4	6,8

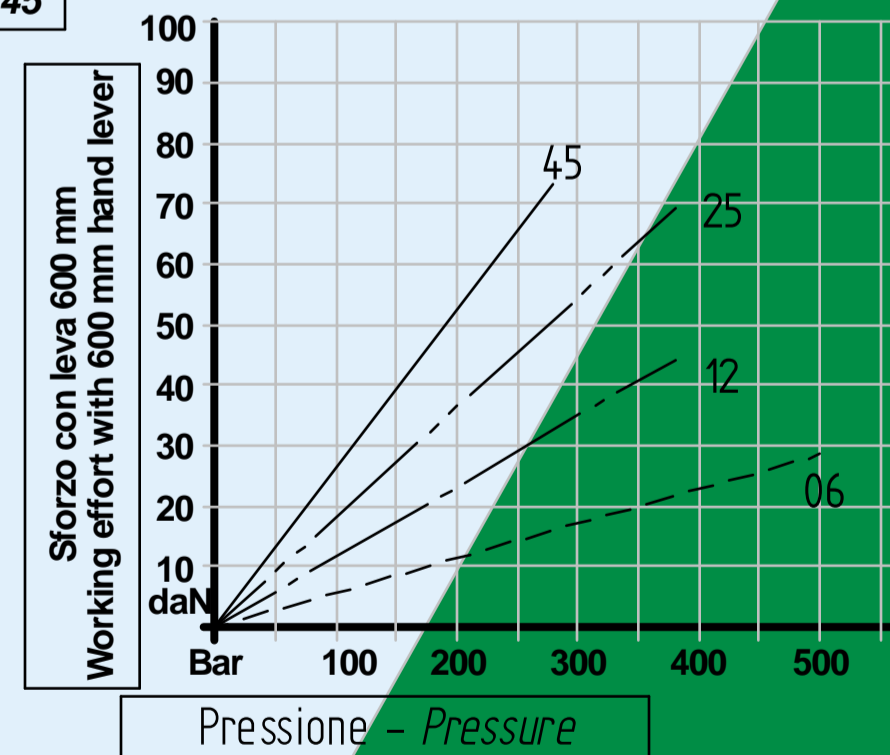
Total Weight Kg
5,7 + Weight of oil tank

Pompa ad ingranaggi - Gear pump



Coppia di serraggio vite con rivetto: 8/10 Nm
Torque of fastened screw: 8/10 Nm

06 12 25 45
Diagramma prove di carico
Load curve



Taratura valvola di massima pressione - Comunque non oltre la pressione massima della pompa.
Relief valve setting - However not over the pumps' max pressure
min - max (bar) 30 - (...)

Codice di ordinazione - Ordering code

ZES	Option 1	017	SE	Option 2	06	SR	Option 3	03
		025			12			05
		045			25			07
		057			45			10
		076						
		098						
		127						
		152						
230								

Option 1 cc Gear pump		Option 2 cc Hand pump		Option 3 Lt Oil Tank	
017	0,16 cc	6	6 cc	SR03	3
025	0,24 cc	12	12,5 cc	SR05	5
045	0,45 cc - Standard Version	25	19,5 cc - Standard Version	SR07	7
057	0,56 cc	45	28 cc	SR10	10
076	0,75 cc				
098	0,92 cc				
127	1,26 cc				
152	1,48 cc				
230	2,28 cc				

Cilindrata Flow (cc)	Pressione massima Max pressure (bar)	Type	Cilindrata Flow (cc)	Pressione massima Max pressure (bar)	rpm min.	rpm max.
6	400	017	0,16	260	700	9.000
12,5	320	025	0,24	260	700	9.000
		045	0,45	280	700	9.000
19,4	300	057	0,56	280	700	9.000
		076	0,75	280	700	9.000
28	250	098	0,92	280	700	6.000
		127	1,26	280	700	6.000
		152	1,48	280	700	6.000
		230	2,28	210	700	5.000